

# Siksha 'O' Anusandhan University

(A Deemed University declared U/S 3 of the UGC Act, 1956)

**Siksha 'O' Anusandhan (SOA)** has been declared as a deemed University, U/S 3 of the UGC Act, 1956 and is located at Bhubaneswar, the capital of Odisha. The University is making persistent endeavour to achieve excellence and carve a niche in the national and global education map. Some of its constituent institutes have been established for almost one and half a decade ago and are well known for their academic excellence. National Assessment & Accreditation Council (NAAC) which has awarded the University *Grade 'A'*, in view of its overall performance. Different faculties of the university have been duly approved by the respective statutory bodies.

The university offers undergraduate, post graduate, dual degree and doctoral programmes in engineering / technology, computer application, sciences, humanities & social sciences, medicine, dental, nursing, business administration, hotel management and catering technology, hospital administration, pharmacy, biotechnology and law.

The university is proactive in its approach to understand and meet the changing requirements of students, employees and the community at large. The university is committed to continuous learning, improvement and transformation in technical and professional education. The university emphasises on the quality of learning process keeping in view of its vision and mission:

## VISION

The SIKSHA 'O' ANUSANDHAN UNIVERSITY will be a leading institution of higher learning in its chosen areas of concentration, preparing future generation through quality teaching and innovative research. It is emerging as a comprehensive and socially inclusive University.

## MISSION

- Educate students to become responsible, enlightened and productive citizen;
- Conduct scholarship and promote entrepreneurship that improve the human conditions;
- Develop leader in all walks of life;
- Enhance the cultural environment of region;

## SALIENT FEATURES

- **Recognitions**
  - a) **A Deemed University declared Under Section 3 of the UGC Act, 1956 (Govt. of India)**
  - b) **Accredited by the National Assessment and Accreditation Council (NAAC) of University Grants Commission (UGC) of India with 'A' Grade.**
  - c) **All the institutes and programmes are duly recognized by respective statutory bodies like National Board of Accreditation; Medical Council of India; Dental Council of India; Pharmacy Council of India; Indian Nursing Council; Odisha Nurses and Mid-wifery Council, Govt. of Odisha; AICTE; Ministry of Health & Family Welfare, Govt. of India; Bar Council of India; ICAR, Govt. of India; etc.**

d) **ISO 9001:2000 Certification by URS, United Kingdom in testimony to our commitment towards imparting quality professional education matching with aspirations of future generation.**

### • Placement

Placement opportunities in different disciplines :

- a) **Engineering** : Infosys, WIPRO, Capgemini, Microsoft, IBM, TCS, Hexaware, Azilant, HCL, Cognizant, Accenture, Tech Mahindra, TVS Motor, Hindustan Motor, Mahindra & Mahindra, Jindal, Cummins India Ltd., Ashok Leyland, Adani Group, Huawei, Syntel, Godrej, Tata Motors, Hindustan Steel Corp., Stencor, Essar Steel, Adhunik Metalics, Tata Steel etc.
- b) **Pharmacy** : Bharat Serums & Vaccines, Bharat Biotech, Ciron Drugs & Pharmaceutical, V-Ensure Pharma Technologies, Medreich, Glenmark Pharmaceuticals, Micro Labs, GeBBS Health Care, Ziquitza Health Care, etc.
- c) **Management** : ICICI, RBS Global, Axis, TATA AIG, Vodafone, HDFC, Airtel, Samsung, ING Vysya, Reliance Communication, Apollo Hospitals, Berger Paints, Asian Paints, Colgate, Palmolive, Bata etc.
- d) **Hotel Management** : Park Hyatt, ITC Sonar, ITC Grand Chola, The Oberoi, Taj Palace, Mayfair, Ginger, The Leela, The Pride Group, Zuri White Sands, Grand Oberoi, ITC Fortune, Le Meridian, etc.

### • Network

- a) One Gbps connectivity through National Knowledge Network under NMEICT, 150 Mbps connectivity (1:1) from TATA Teleservices Ltd. and 20 Mbps connectivity from STPI managed by RADWARE load balancer.
- b) Fully wi-fi residential campus with modern facilities.

### • Learning Processes and Resources

- a) State-of-the-art infrastructure with smart classrooms.
- b) e-Library with full text access of e-journals through EBSCOhost, Scopus, Science Direct, IEL & Manupatra.
- c) Book Bank facility
- d) Open access library with reading facility round the clock.
- e) University plenary lecture series (by eminent scientists and researchers).
- f) Qualified and experienced faculty members of national and international repute.
- g) Continuous evaluation system of teaching-learning process.
- h) Proactive proctorial system.

### • Research Environment

- a) Conducive research ambience.
- b) Regular Publications in high impact Research Journals.
- c) Multi-disciplinary Research Cells in the areas of Energy, Embedded systems, MEMS and Advanced

Material Science, Visual surveillance & tracking, biomedical signal & image processing.

- d) Centre of Excellence for theoretical and mathematical sciences, Biomechanical Research Lab., Multiferroic Research Lab., Banking Simulation Lab., Behavioural Science Lab.
  - e) National MEMS Design Centre established under National Program for Micro and Smart Materials (NPMAS), Govt. of India, (Mentor: IISc, Bangalore).
  - f) Collaboration with Central Power Research Institute (CPRI) in the area of Energy Systems under RSOP scheme of Ministry of Power, Govt. of India.
  - g) Research project on Multiferroics from DRDO.
  - h) Proactive measures for inter-disciplinary research programmes.
  - i) Ph.D. programmes with University fellowship.
  - j) Faculty Development Programmes, Entrepreneurship Development Programmes and Management Development Programmes.
- **Industry Collaborations**
    - a) Indian Institution of Industrial Engineering (IIIE) conferred Performance Excellence Award in Golden category for Financial and Operational Strength for the year 2011-12.
    - b) MOU with IMMT(CSIR), Bhubaneswar, Infosys for Campus Connect Programme (CCP), WIPRO for Mission 10X, Hexaware for Centre of Excellence and Mind Tree for Gyanbrukshya, Snowman Logistic, Bangalore and Paladion Network, Mumbai.
    - c) Industry-Institute interaction through seminars, guest lectures, study tours, consultancy and projects.
  - **International Collaborations**

Collaborations with Florida International University, USA; Multimedia University, Malaysia; Dongseo University, Korea; University of Texas, Arlington, USA; Cambodian University for Specialities, Cambodia; Ho-Chi-Minh City University of Transport, Vietnam; Rajamangala University of Technology, Thailand; VJTI, Matunga, Mumbai; NICED, Kolkata; IIIE, Mumbai; College of Engineering, Pune, etc.
  - **Student Amenities**
    - a) Free Group Insurance scheme for all students.
    - b) Medical facilities (free consulting & subsidized investigations) in its own medical college & hospital (IMS & SUM Hospital).
    - c) High degree of care and training for overall personality development.
    - d) Scholarships to meritorious and needy students.
    - e) Health Club (MULTIGYM), Indoor and outdoor extra curricular activities.
    - f) Social welfare initiatives in plantation of trees, blood donation camp, and relief during natural calamities.
    - g) NCC, NSS, Yoga, Sports, Art and Culture as extra-curricular activities
    - h) JAGGO to help socially underprivileged kids.
    - i) Community Radio service to solve the socio-economic, cultural, educational & health problems of the people in the neighbourhood of university.
    - j) Robotics club, photographic club, music club, dance club, quiz club, painting (Srishti) club to encourage creative activities amongst the students.

#### THE FACULTIES OF SOA

- **INSTITUTE OF TECHNICAL EDUCATION & RESEARCH** *Faculty of Engineering and Technology*
- **INSTITUTE OF MEDICAL SCIENCES & SUM HOSPITAL** *Faculty of Medical Sciences*
- **INSTITUTE OF DENTAL SCIENCES** *Faculty of Dental Sciences*
- **INSTITUTE OF BUSINESS & COMPUTER STUDIES** *Faculty of Management Sciences*
- **SCHOOL OF HOTEL MANAGEMENT** *Faculty of Hotel Management*
- **SCHOOL OF PHARMACEUTICAL SCIENCES** *Faculty of Pharmaceutical Sciences*
- **SUM NURSING COLLEGE** *Faculty of Nursing*
- **SOA NATIONAL INSTITUTE OF LAW** *Faculty of Legal Studies*

#### INSTITUTE OF TECHNICAL EDUCATION & RESEARCH (ITER)

(Faculty of Engineering & Technology)

The Institute of Technical Education and Research (ITER), was established during the academic session 1996-97. The journey of academic excellence has brought various accolades to the institution including quality benchmarking by various statutory bodies. The institute has earned recognition for its high quality educational programmes and research activities in the field of engineering and technology. Active teaching in the institution is facilitated by highly qualified and motivated faculty members of repute. The faculty members keep themselves abreast with the development in critical areas of education and research in science and technology across the globe. ITER is the corporate life member of the Institution of Engineers (India). The institute has memorandum of understanding with IMMT (CSIR), Infosys for Campus Connect Programme (CCP), WIPRO for Mission 10X, Hexaware for Centre for Excellence and Mind Tree for Gyanbrukshya.

#### ACADEMIC PROGRAMMES

- a) **Under Graduate Programmes :**
  - i) **B.Tech (4 years)**
    1. Civil Engineering
    2. Computer Science & Engineering
    3. Computer Science & Information Technology
    4. Electrical Engineering
    5. Electrical & Electronics Engineering
    6. Electrical Instrumentation & Control Engineering
    7. Electronics & Communication Engineering
    8. Electronics & Instrumentation Engineering
    9. Mechanical Engineering
  - b) **B.Tech Lateral Entry in above programmes (3 Years)**
  - c) **Dual Degree in Engg. (5 years) - B.Tech. & M.Tech.**
  - d) **Dual Degree in Management (5 years) - B.Tech. & MBA**
  - e) **Post Graduate Programmes: M.Tech (2 years)**
    - Electronics & Instrumentation Engineering Department**
      1. VLSI Design & Embedded Systems
      2. Microelectronics
    - Civil Engineering Department**
      3. Structural Engineering
      4. Geotechnical Engineering

**Electrical Engineering Department**

5. Power Electronics & Drives
6. Energy Technology & Management
7. Renewable Energy

**Electronics & Communication Engineering Department**

8. Communication System Engineering
9. Digital Signal & Image Processing

**Electrical & Electronics Engineering Department**

10. Power Systems & Power Electronics

**Computer Science & Information Technology Department**

11. Computer Science & Informatics

**Mechanical Engineering Department**

12. Thermal Science & Heat Power Engineering
13. Manufacturing Sciences & Engineering
14. Mechanical System Design

**Computer Science & Engineering Department**

15. Computer Science & Engineering
16. Computer Science & Data Processing

**Inter-disciplinary M.Tech. Programmes**

17. Material Science & Technology
18. Environmental Science & Technology
19. Biotechnology

**f) M.Sc. in Nano Science & Nano Technology****g) Master of Computer Application (MCA) (3 years)****h) Lateral Entry MCA (2 years)****i) Ph.D. Programmes In Engineering / Technology, Science, Humanities & Social Sciences.****INSTITUTE OF MEDICAL SCIENCES & SUM HOSPITAL (IMS & SH)****(Faculty of Medical Science)**

SUM Hospital was set up in 2003 to offer quality health services in the State. Subsequently, IMS came up with MBBS programme since the academic session 2007-08. SUM Hospital, the state-of-the-art modern hospital, has 750 beds, 150 cabins with multi-speciality facilities like Dialysis, CT scan, MRI along with MICU, SICU, RICU, Neuro ICU, ICCU, NICU, PICU, and Cathlab.

IMS & SUM Hospital has the following well equipped departments as enlisted below:

- **Non-Clinical Departments** – Anatomy, Bio-chemistry, and Physiology.
- **Para-Clinical Departments** – Preventive & Social Medicine, Pathology, Micro-Biology, Forensic Medicine, Pharmacology
- **Clinical Departments** – Medicine, Paediatrics, Surgery, Orthopaedics, Obstetrics & Gynaecology, Ophthalmology, ENT, Radiology, Chest and TB, Psychiatry, Skin and VD, Anesthesiology, transfusion medicine, physical medicine & rehabilitation.
- **Super Speciality Departments** - Cardiology, Cardiothoracic & vascular surgery, Endocrinology, Nephrology, Gastroenterology, Plastic Surgery, Urology, Neuro surgery, Neurology, Oncology, Clinical Haematology, Paediatric Surgery & Bone Marrow Transplant Unit.

**ACADEMIC PROGRAMMES**

- a) MBBS Programme (5½ years including One year rotating Housemanship).
- b) MS programmes (3 years) in General Surgery and Ophthalmology

- c) MD programmes (3 years) in Pharmacology, Pathology, Biochemistry, Microbiology, Anatomy, Physiology, Community Medicine, Forensic Medicine & Toxicology, DVL, Anaesthesia and Immuno Haematology & Blood Transfusion.

- d) Ph.D. Programme

**INSTITUTE OF DENTAL SCIENCES (IDS)****(Faculty of Dental Sciences)**

IDS established in the academic session 2006-07 with well furnished state-of-the-art equipment, and instruments with a full fledged dental hospital. The institute has 200 fully automatic electrical dental chairs with other advanced facilities.

**ACADEMIC PROGRAMMES**

- a) BDS programme (4 years plus one year paid rotating internship)
- b) MDS Programme (3 years) in Orthodontics & Dentofacial Orthopedics, Oral Maxillofacial Surgery, Oral Medicine & Radiology, Oral Pathology & Microbiology, Conservative Dentistry & Endodontics, Prosthodontics & Crown Bridge, Periodontology.
- c) Ph.D. Programme

**INSTITUTE OF BUSINESS & COMPUTER STUDIES (IBCS)****(Faculty of Management Sciences)**

IBCS, established in the academic session 1997-98, offers two year programme in Master of Business Administration (MBA) and two year programme in MBA (Hospital Administration). The institute is responsive to the growing requirements of different sectors like manufacturing, distribution, services, finance, networking in both government and private organisations. In addition, institute prepares and grooms professionals in all important areas of business administration and consultancy. The institute is a life member having 'A' grade ranking by AIMA, Indian Institute of Public Administration, Member of Institute of Directors and Computer Society of India and association with CII, FIEO, FICCI, and RAI.

**ACADEMIC PROGRAMMES**

- a) MBA in specialised areas, viz., marketing, finance, human resource, systems, retail, risk and insurance, aviation, telecom, agri & rural, and communication & media (2 years)
- b) MBA in Hospital Administration (2 years)
- c) Ph.D. Programme

**SCHOOL OF HOTEL MANAGEMENT (SHM)****(Faculty of Hotel Management)**

SHM, established in the academic session 2004-05 is conducting courses in Hotel Management & Catering Technology. Its flagship programme, the four year BHMCT and two year Master's degree in Hospitality and Tourism Management boasts of a dynamic curriculum, rigorous in-house training and has the mandate of the hospitality industry. SHM is a Corporate Partner with Mayfair Group of Hotels and registered user institute for American Hotel and Lodging Association. It is also a member of Hotel and Restaurant Association of Odisha (HRAO).

**ACADEMIC PROGRAMMES**

- a) Bachelor's degree in Hotel Management & Catering Technology (BHMCT) (4 years)
- b) Lateral Entry BHMCT (3 years)
- c) Master's degree in Hotel Management & Catering Technology (MHMCT) (2 years)



- d) M.A./M.Sc. in Hospitality & Tourism Management  
e) Ph.D. Programme

### SCHOOL OF PHARMACEUTICAL SCIENCES (SPS)

(Faculty of Pharmaceutical Sciences)

SPS, established in the academic session 2004-05 is one of the leading schools of studies in pharmaceutical sciences offering programme in pharmaceutical sciences and research. The institute has state-of-the-art laboratory, library, and infrastructure.

#### ACADEMIC PROGRAMMES

- a) B.Pharm Programme (4 years)  
b) Lateral Entry B.Pharm Programme (3 years)  
c) M.Pharm Programmes (2 years) in :  
(i) Pharmaceutics  
(ii) Pharmaceutical Analysis and Quality Assurance  
(iii) Pharmacology  
(iv) Pharma Technology  
d) Master of Science (M.Sc.) in :  
(i) Medicinal & Aromatic Plants  
(ii) Molecular Biology  
(iii) Chemical Biology & Drug Design  
e) Ph.D Programme

### SUM NURSING COLLEGE (SNC)

( Faculty of Nursing)

SNC, established in the academic session 2004-05 has been imparting quality education in nursing.

#### ACADEMIC PROGRAMMES

- a) B.Sc. in Nursing (Basic) (4 years)  
b) B.Sc. in Nursing (Post Basic) (2 years)  
c) M.Sc. in Nursing (2 years)  
(Spl. - Medical & Surgical Nursing, Community Health Nursing, Psychiatric Nursing, Paediatric Nursing, & Obstetric & Gynaecological Nursing)  
d) Diploma in Critical Care Nursing (1 year)  
e) Diploma in Operational Room Nursing (1 year)  
f) Ph.D Programme

### CENTRE FOR BIO-TECHNOLOGY (CBT)

(Faculty of Pharmaceutical Sciences)

The Centre for Bio-Technology was started in the academic year 2007-08. The centre is well furnished with latest technical know-how, state-of-the art laboratories and has a well stocked library.

#### ACADEMIC PROGRAMMES

- a) M.Sc. in Biotechnology Programme (2 years)  
b) Ph. D Programme

### SOA NATIONAL INSTITUTE OF LAW (SNIL)

(Faculty of Legal Studies)

The SOA National Institute of Law (SNIL) was established in the academic year 2010-11 with a view to meet the growing demands of highly trained legal professional in both corporate sectors and judicio-legal systems.

#### ACADEMIC PROGRAMMES

- a) Integrated BA LLB and BBA LLB Programme (5 years)  
b) LLM Programme (1 year)  
c) Ph.D. Programme

## SIKSHA 'O' ANUSANDHAN UNIVERSITY ADMISSION TEST-2015 (SAAT-2015)

Siksha 'O' Anusandhan University Admission Test (SAAT), a national level entrance test is conducted by Siksha 'O' Anusandhan University every year to select bright students from different parts of our country. The test is being conducted

for different programs offered in different constituent institutes / schools of the university. **SAAT-2015**, the seventh edition of this entrance test, will be held on **9<sup>th</sup> May 2015 (Saturday)** at 70 centers across 46 cities of India. The test is primarily a multiple choice type written test and the standard of the test is comparable with any other national level entrance test. Short listed candidates will be called to attend an open counselling for admission into various programmes of the university. Another feature of this entrance test is that the candidates with diploma in engineering/ technology/ pharmacy and hotel management are eligible for admission into regular courses under lateral entry scheme through SAAT-2015.

#### 1.1. BACHELOR DEGREE PROGRAMMES :

- a) **Bachelor of Technology (B.Tech.)** in different branches of engineering at ITER.  
b) **Bachelor of Medicine & Bachelor of Surgery (MBBS)** at IMS & SH.  
c) **Bachelor of Dental Surgery (BDS)** at IDS.  
d) **Bachelor of Pharmacy (B. Pharm.)** at SPS.  
e) **Bachelor of Hotel Management & Catering Technology (BHMCT)** at SHM.  
f) **Bachelor of Science in Nursing (B.Sc. Nursing)** at SNC.  
g) **Post Basic Bachelor of Science in Nursing (Post Basic B. Sc. Nursing)** at SNC.

#### 1.2. DUAL DEGREE PROGRAMMES :

- a) **Dual Degree in Engineering (B.Tech. & M.Tech.) (DDE)** in different branches of engineering at ITER.  
b) **Dual Degree in Management (B.Tech. & MBA) (DDM)** at ITER.  
c) **BA LLB and BBA LLB** at SNIL

#### 1.3. MASTER DEGREE PROGRAMMES :

- a) **Master of Technology (M.Tech.)** in Electronics & Instrumentation Engineering Department, Civil Engineering Department, Electronics & Communication Engineering Department, Electrical Engineering Department, Electrical & Electronics Engineering Department, Mechanical Engineering Department, Computer Science & Information Technology Department, Computer Science & Engineering Department, Computer Science & Data Processing, Material Science & Technology, Environmental Science & Technology and Biotechnology at ITER.  
b) **Master of Computer Applications (MCA)** at ITER.  
c) **Master of Business Administration (MBA)** at IBCS.  
d) **MBA in Hospital Administration (MHA)** at IBCS.  
e) **Master of Hotel Management & Catering Technology (MHMCT)** at SHM.  
f) **Master of Arts / Science in Hospitality and Tourism Management (MHTM)** at SHM.  
g) **Master of Pharmacy (M.Pharm)** in Pharmaceutics, Pharmaceutical Analysis & Quality Assurance, Pharmacology and Pharmatechnology at SPS.  
h) **Master of Science (M.Sc.)** in  
\* Nano Science & Nano Technology at ITER,  
\* Medicinal & Aromatic Plants, Molecular Biology and Chemical Biology & Drug Design at SPS, and  
\* Biotechnology at CBT.  
i) **Master of Science in Nursing (M.Sc. Nursing)** in Medical & Surgical Nursing, Community Health Nursing,

Psychiatric Nursing, Paediatric Nursing, and Obstetric & Gynaecological Nursing at SNC.

j) **Master of Laws (LLM)** at SNIL.

#### 1.4. LATERAL ENTRY PROGRAMMES :

Under Lateral Entry (LE) scheme 20% of intake capacity of previous year in appropriate discipline and carry forward vacant seats of 1st year of Engineering / Pharmacy / Hotel Management / Nursing / MCA will be filled up at the 2nd year level. These seats will be considered over and above the intake capacity. (Refer - Appendix-XVIII)

- a) **Bachelor of Technology (B.Tech.)** in different branches at ITER.
- b) **Lateral Entry MCA** at ITER.
- c) **Bachelor of Pharmacy (B.Pharm.)** at SPS.
- d) **Bachelor of Hotel Management and Catering Technology (BHMCT)** at SHM.

## 2. ELIGIBILITY CRITERIA

### 2.1 For Bachelor Degree Programmes :

#### a) B.Tech. / Dual Degree in Engineering / Dual Degree in Management :

Pass or appearing (in the year 2015) at 10+2 or equivalent examination with Physics and Mathematics as compulsory subjects alongwith one of the following subjects : Chemistry / Computer Science / Information Technology / Biotechnology / Biology / Informatics / Statistics or any other subject as approved by appropriate authority, by securing atleast 50% marks taken together in the subjects mentioned.

OR

Pass in Diploma in Engineering / Technology with less than 60% marks in aggregate.

#### b) MBBS / BDS

Pass or appearing at 10+2 examination (in the year 2015) or any equivalent with Physics, Chemistry, Biology (Botany and Zoology) and English individually and must have secured a minimum of 50% marks taken together in Physics, Chemistry and Biology in the qualifying examination. In respect of the candidates belonging to Scheduled Castes, Schedules Tribes and Other Backward Classes the marks secured in Physics, Chemistry and Biology taken together in qualifying examination can be 40% instead of 50% for General Candidates. For PH candidates qualifying examination marks is 45% in Physics, Chemistry and Biology taken together. As per MCI & DCI guidelines candidates have to secure at least 50% marks in Physics, Chemistry and Biology (Botany and Zoology) taken together in the entrance test. For SC / ST / OBC candidates the limit is minimum of 40% marks in Physics, Chemistry and Biology (Botany and Zoology) taken together in the entrance test. For PH candidates the limit is minimum of 45% marks in Physics, Chemistry and Biology (Botany and Zoology) taken together in the entrance test. All candidates must pass in English.

**Age Limit:** The lower age limit is 17 years and the upper age limit is 25 years as on 31.12.2015. Further provided that this upper age limit shall be relaxed by a period of 5 (five) years for SC and ST candidates.

#### c) B.Pharm.

Pass or appearing at 10+2 examination (in the year 2015) with Physics and Chemistry as compulsory

subjects along with one of the following subjects: Mathematics / Biotechnology / Computer Science / Biology / Information Technology or any other subject as approved by appropriate authority, by securing atleast 45% marks taken together in the subjects mentioned (40% incase of candidates belonging to SC / ST / OBC category)

OR

Pass in Diploma programme in Pharmacy with less than 60% marks.

#### d) BHMCT

Pass or appearing at 10+2 examination (2015) in any discipline with atleast 45% marks (40% incase of SC / ST / OBC category)

#### e) B.Sc. in Nursing (Basic)

Pass or appearing at 10+2 examination (in the year 2015) with at least 45% marks in aggregate (English, Physics, Chemistry & Biology taken together) and 40% marks in aggregate for SC / ST / OBC candidates.

**Age Limit :** The lower age limit is 17 years as on 31.12.2015.

#### f) Post Basic B.Sc. in Nursing (Post Basic)

Passed GNM examination, and registered with concerned State Nursing Council. Candidate must be a member of TNAI.

#### g) Five years integrated BA LLB and BBA LLB Honours Programme

Pass or appearing (2015) the 10+2 or equivalent in any stream with atleast 45% marks. Relaxable to 40% in case of SC/ST. Candidate should not have completed 20 years of age as on 1<sup>st</sup> August 2015.

### 2.2 For Master Degree Programmes :

#### a) M.Tech.

Pass or appearing in B.E. / B.Tech / AMIE / MCA / M.Sc. in the respective discipline or equivalent. Candidates having MCA and M.Sc. (Maths) degree are eligible for M.Tech in Comp. Sc. & Data Processing. Candidates with M.Sc. (Electronics) are eligible for M.Tech. in Electronics & Communication Engineering and M.Tech. in Electronics & Instrumentation Engineering. M.Sc. in Computer Science and IT are eligible for M.Tech. in Computer Science & Engineering and CS & IT respectively. A candidate with B.Tech. (Environmental / Chemical / Civil / Mechanical / Metallurgy) or M.Sc. (Environmental Science / Chemistry / Biotechnology / Geology / Life Science / Botany / Zoology) is eligible for M.Tech. in Environmental Science & Technology. For M.Tech. Material Science & Technology candidate must have M.Sc. (Physics) / M.Sc. (Chemistry) / B.Tech. (Electronics & Communication Engg.) / B.Tech (Electrical Engg.)

For M.Tech. in Biotechnology, candidates having B.Tech./B.E. in Biotechnology or related fields / M.Sc. in Physics, Chemistry, Biotechnology, Life Science or equivalent / MBBS / B.Pharm./B.V.Sc. with Biology as a subject at +2 level are eligible.

For admission to M.Tech, candidates have to pass the qualifying examination with atleast 50% marks.

**GATE qualified candidates are exempted from the entrance test, but they have to submit the filled up form.**

**Admission into M.Tech. programmes will be done on the basis of performance in SAAT-2015 or valid GATE score and personal interview taken together. After the interview, the merit list prepared by the Board members will be final.**

#### b) MCA

Pass or appearing (in the year 2015) at three year Bachelor Degree in any discipline from any recognised University with atleast 50% of marks (45% in case of candidates belonging to SC / ST / OBC Category) having Mathematics at 10+2 level or at +3 level.

**Candidates having Business mathematics at +2 or +3 level are not eligible.**

#### c) MBA / MHA / MHTM / MHMCT

Pass or appearing (2015) three year Bachelor Degree in Science, Commerce and Arts/B.E./B.Tech./MBBS/B.Pharm./B.Sc. Agri./BVSC/BHMS/BAMS/BDS/BPT/BHMCT/BBA/BCA examination or equivalent in 2015 from any recognised University with atleast 50% marks (45% in case of candidates belonging to SC/ST/OBC category). For MHMCT the candidate must have secured atleast 50% marks (45% incase of candidates belonging to SC/ST/OBC Category) in BHMCT.

**Candidate having a minimum composite score of 500 in GMAT/CAT/XAT/MAT/ATMA or any other equivalent test are exempted from appearing SAAT-2015. They are required only to submit the filled up application form. Admission will be done on the basis of performance in SAAT-2015 or MAT followed by group discussion and personal interview (GD/PI), all taken together.**

#### d) M.Pharm.

Pass or appearing (2015) at B.Pharm examination from any recognized University with atleast 50% marks.

#### e) M.Sc. All (Biotechnology / Nano Science & Nano Technology / Medicinal & Aromatic Plants / Molecular Biology / Chemical Biology & Drug Design)

Pass or appearing (2015) at three year Bachelor degree in Science OR four year Bachelor course in Agriculture / Pharmacy / Veterinary / Engineering / Technology / Medicine (MBBS/BDS) from any recognised University with atleast 50% marks (45% incase of candidates belonging to SC / ST / OBC category).

For M.Sc. in Chemical Biology & Drug Design the candidates should have B.Sc. Chemistry (Honours) / B.Tech in Chemical Engineering / B.Pharm / M.Pharm with atleast 50% marks (45% incase of candidates belonging to SC / ST / OBC category).

#### f) M.Sc. in Nursing

Passed B.Sc. Nursing (Basic/Post Basic) Degree with 55% aggregate from an Institution recognized by Indian Nursing Council with a minimum of one year experience either in teaching or clinical area but they should be registered in State Nursing Council as a Registered Nurse and Registered Midwife.

#### g) LLM :

Pass or appearing (2015) Bachelor Degree in Law or studied Integrated Law Course or equivalent thereof,

from any recognized University, securing 50% Marks in aggregate.

#### 2.3 For Lateral Entry Programmes :

##### a) Admission to 2nd year Degree Programme in Engineering, Pharmacy & Hotel Management for Diploma holders :

Pass or appearing (in the year 2015) at three year diploma course in Engineering / Pharmacy and Hotel Management respectively with at least 60% marks in aggregate from State Council of Technical Education and Vocational Training (SCTE&VT), Odisha or equivalent.

For Pharmacy, pass or appearing (in the year 2015) at two year diploma course in Pharmacy with minimum 60% marks in aggregate from State Board of Pharmacy (SBP) or SCTE&VT, Odisha, or equivalent.

##### b) Lateral Entry MCA

Pass or appearing (in the year 2015) in three year Bachelor of Computer Application (BCA), B.Sc. in Information Technology and B.Sc. in Computer Science with atleast 60% of marks in aggregate from any recognized University.

##### c) Choice of Discipline:

Candidates having Diploma in Engineering indicated under Column – I are eligible for admission into the corresponding discipline only mentioned under Column – II (Appendix - XVIII). Candidates will appear a common paper in the entrance test and the branch allotment will be done during the counselling as per Appendix-XVIII.

**NOTE: Candidates appearing at the qualifying examination (in the year 2015) may also apply. But, they have to produce the pass certificate of the qualifying examination with pass mark in individual appropriate subjects as mentioned for different programmes on the day of counselling, failing which the rank / position secured in the entrance examination will stand cancelled automatically and they will have no claim for the admission as per the rank. The above mentioned clause is also applicable for pass out candidates.**

**e.g.: For B.Tech the candidate has to secure pass mark including in each of the following subjects - Physics, Mathematics and any one of the subject as mentioned in section 2.1 (a).**

#### 3. IMPORTANT DATES :

Last Date of Issue of Form	: 04.04.2015
Last Date of Form submission	: 04.04.2015
Date of Entrance Test	: 09.05.2015
Publication of Result	: 20.05.2015
Counselling (Tentatively)	: First week of June 2015

#### 4. AVAILABILITY OF APPLICATION FORM :

- a) Application Form & Information Brochure of SAAT-2015 can be obtained in Person / by Post from the SOA University, Khandagiri Square, Bhubaneswar - 751030, or from different counters of the constituent institutes of the university on payment of ₹ 500/- in cash (on account of examination fees).



- b) Application form & information brochure of SAAT-2015 can also be obtained from designated branches of Axis Bank and Punjab National Bank (enlisted in Appendix-XIX) on payment of ₹ 500/- in cash (on account of examination fees) .
- c) Candidates can apply online at [www.soauniversity.ac.in](http://www.soauniversity.ac.in) by making a payment of ₹ 500/- (on account of examination fees), through Debit Card/Credit Card.

#### 5. INSTRUCTIONS FOR FILLING UP SAAT-2015 APPLICATION FORM :

- a) Please note down the **six-digit application number** for future reference. Read the instructions carefully before filling up the application form. Refer to the sample filled in application form provided in this brochure.
- b) First write in capital letters the required information in rectangular boxes above the circles (wherever provided) and then darken the appropriate circle underneath each letter. What you write in these boxes is only for your guidance and for verification that you are darkening the correct circle.
- c) The application form will be processed on OMR. Therefore, darken the circles carefully using HB pencil or blue / black ball pen only. Please see the illustration on the application form to learn how to darken the circles.
- d) If you wish to change a marking, erase the darkened circle completely and then darken the appropriate circle. This is possible if you are using a pencil. Otherwise, you can use white correction fluid for covering the wrongly darkened circle.
- e) Do not scribble, smudge, cut, tear, or wrinkle the application form. Do not put any stray marks anywhere on the application form.
- f) Do not write or put any mark on the Barcodes.
- g) Your photograph, signature and address are to be scanned by machine that recognizes only good quality images, and from the specified areas of the form. Therefore **paste a good colour photograph taken not more than one month earlier**, and write your address and sign in **black / blue ball pen** only. Retain two copies of the same photograph for future.
- h) Please note that your name, your parents' / guardian's name and your date of birth should exactly be the same as in your High school or your first Board / Pre-University examination certificate. Deviation, if any whenever discovered, may lead to cancellation of your candidature.
- i) Your application must be complete in all aspects. Incomplete application or application filled in a language other than English will be summarily rejected.
- j) Options filled by you in the application form can not be changed at a later stage.
- k) **It is suggested that you make a photocopy of the application form before filling and use that first for practice.**
- l) **No reservation norms are applicable for Lateral Entry (LE) admissions.**

#### 5.1 Name of the Candidate: (Item - 1)

Write your name in CAPITAL LETTERS as given in your original certificate of the High School or equivalent examination in Black / Blue ball pen. Write a single letter in each box. Within any one part of your name, do not leave any blank box. Leave one and only one blank box between any two parts of the name. If your name has several initials leave one blank after each of them. If it requires more than 35 boxes abbreviate the middle name(s). Darken the appropriate circle under each letter of the name.

#### 5.2 Reservation : (Item - 2)

Candidates belonging to SC/ST/OBC/PH/WO/MC category and seeking admission under reservation are required to darken the appropriate circles. Women candidates should darken the corresponding circle. General candidates are required to darken the corresponding circle. No reservation norms apply for lateral entry. OBC candidates are only eligible for mark relaxation in the qualifying examination.

**Candidates can opt for multiple choices.**

Category	Code
General	GE
Scheduled Caste	SC
Scheduled Tribe	ST
Women	WO
OBC	OBC
Minority Community	MC
Physically Challenged	PH

#### 5.3 Your Present Qualification : (Item - 3) Use Table-1

Candidates are required to enter the correct code of their present qualification as mentioned in **Table-1 in Page No. 9 and 10 (see the 1st column)**. For example, if the candidate's present qualification is 10th +2 / 12th pass or appearing then, choose the code as 01. If his/her present qualification is B.E / B.Tech. pass or appearing then, choose the code as 02.

#### 5.4 Courses Available for you: (Item - 4) Use Table - 1

Enter the appropriate course code in the boxes provided at the top and darken the corresponding circles below them against the programme code (as given in Table-1) that you want to appear (*e.g Engineering, Medical, Dental, Nursing, Pharmacy, MBA, MCA, Lateral entry, etc. in a particular discipline or possible combinations*). **Candidates are required to opt for only one code from various options depending upon their present qualification and preference.** For example, if you are willing to appear simultaneously for "B.Tech. / Dual Deg. Engg. / Dual Deg. Mgmt., MBBS / BDS, & B.Pharm", then darken circle 02. Similarly, if you are willing to appear for MBBS / BDS only, then darken the circle 08. **Examination time table will not permit other combinations of programmes.**

*As per eligibility criteria, Diploma holders are required to apply either for 1st Year or 2nd Year admission but not for both. If two applications are received from one Diploma holder then both will be rejected.*

COURSE CODE FOR ADMISSION TO FIRST YEAR PROGRAMMES : TABLE-1

Your present Qualification pass or appearing (with code)	Courses Available for you	Choose the course code as follows	For eligibility refer section	Name of the Question at SAAT-2015 with Nos. of Questions.	For Syllabus Refer Appendix	
10th+2 / 12th (Code - 01)	B.Tech./Dual Deg. Engg. (DDE)/ Dual Deg. Mgmt. (DDM) / MBBS & BDS / B.Pharm / B.Sc. Nursing	01	2.1 (a, b, c & e)	Phy & Chem - 120 Math - 60 Bio - 120	Appx-I (Page- 16)	
	B.Tech./ DDE / DDM / MBBS & BDS / B.Pharm.	02	2.1 (a, b & c)	Phy & Chem - 120 Math - 60   Bio - 120	Appx-I (Page-16)	
	B.Tech./ DDE / DDM / MBBS & BDS	03	2.1 (a & b)	Phy & Chem -120 Math - 60   Bio - 120	Appx-I (Page-16)	
	B.Tech./ DDE / DDM / B.Pharm / B.Sc. Nursing	04	2.1 (a,c & e)	Phy & Chem - 120 Math - 60   Bio - 120	Appx-I (Page-16)	
	MBBS & BDS / B.Pharm. / B.Sc. Nursing	05	2.1 (b, c & e)	Phy & Chem-120 Math - 60   Bio - 120	Appx-I (Page-16)	
	B.Tech./ DDE / DDM / BBA LLB / BA LLB	06	2.1 (a & g)	Phy & Chem - 120 Math - 60   LLB-120	Appx-I (Page-16/33)	
	B.Tech./ DDE / DDM only	07	2.1 (a)	Phy & Chem-120 Math-60	Appx-I (Page-16)	
	MBBS / BDS only	08	2.1 (b)	Phy & Chem - 120 Bio - 120	Appx-I (Page-16)	
	B.Pharm. only	09	2.1 (c)	Phy & Chem-120 Math - 60   Bio - 120	Appx-I (Page-16)	
	B.Sc. Nursing only	10	2.1 (e)	Phy & Chem - 120 Bio-120	Appx-I (Page-16)	
	BHMCT	11	2.1 (d)	BHMCT-120	Appx-VI (Page-24)	
	BBA LLB / BA LLB	12	2.1 (g)	LLB-120	Appx-XIII (Page-33)	
B.E./B.Tech. (Code-02) or M.Sc.* / MCA* (Code-02)  *Check eligibility for respective program.	M.Tech.	Discipline			Appx-X	
		EIE / ECE	21	2.2(a)	M.Tech (ECE)-120	Page-25
		EE / EEE	22	2.2(a)	M.Tech (EE)-120	Page-27
		CSE / CSIT / CSDP	23	2.2(a)	M.Tech (CSE)-120	Page-28
		Civil Engg.	24	2.2(a)	M.Tech. (Civil)-120	Page-29
		Mechanical Engg.	25	2.2(a)	M.Tech (ME)-120	Page-26
		Biotechnology	26	2.2(a)	M.Tech (Biotech)-120	Page-30
		Environmental Sc. & Engg.	27	2.2(a)	M.Tech. (ENV)-120	Page-31
		Material Science & Engg.	28	2.2(a)	M.Tech. (MAT)-120	Page-31



Your present Qualification pass or appearing (with code)	Courses Available for you	Choose course code as follows	For eligibility refer section	Name of the Question at SAAT-2015 with 120 Nos. of Questions.	For Syllabus Refer Appendix	
B.E./B.Tech. (Code-02) or M.Sc.*/MCA* (Code-02)  *Check eligibility for respective program.	Appear entrance for both M.Tech & MBA				Appx.-X / VII	
	M.Tech. / MBA	M.Tech (ECE / EIE) / MBA	31	2.2 (a&c)	M.Tech (ECE) / MBA	Page-25/24
		M.Tech (EE / EEE) / MBA	32	2.2 (a&c)	M.Tech (EE) / MBA	Page-27/24
		M.Tech(CSE/CSIT/CSDP) / MBA	33	2.2 (a&c)	M.Tech (CSE) / MBA	Page-28/24
		M.Tech. (Civil Engg.) / MBA	34	2.2 (a&c)	M.Tech. (Civil) / MBA	Page-29/24
		M.Tech. (Mech. Engg.) / MBA	35	2.2 (a&c)	M.Tech (ME) / MBA	Page-26/24
		M.Tech. (Biotech) / MBA	36	2.2 (a&c)	M.Tech (Biotech) / MBA	Page-30/24
		M.Tech. (Env. Sc.&Engg) / MBA	37	2.2 (a&c)	M.Tech. (ENV) / MBA	Page-31/24
	Material Science & Engg / MBA	38	2.2 (a&c)	M.Tech. (MAT) / MBA	Page-31/24	
B.Sc. Nursing (Code-03)	M.Sc. Nursing	40	2.2(e)	M.Sc. Nursing	Appx-XI Page-32	
B.Pharm. (Code-04)	M.Pharm	41	2.2(d)	M.Pharm.	Appx-VIII Page-24	
B.Sc.* (Code-05)  *Check eligibility for respective program.	M.Sc. Biotechnology	42	2.2(f)	M.Sc. (All)	Appx-IX Page-25	
	M.Sc. Nano Science & Nano Tech.	43				
	M.Sc. Medicinal & Aromatic Plant	44				
	M.Sc. Molecular Biology	45				
	M.Sc. Chemical Biology & Drug Design	46				
Any Graduate (Code-06)	MCA	47	2.2(b)	Mathematics-60 Computer-60	Appx-V Page-23	
	MBA / MHA / MHTM	48	2.2(c)	MBA	Appx-VII Page-24	
LLB (Code-07)	LLM	49	2.2 (g)	LLM	Appn-XIV Page-33	
BHMCT (Code-08)	MHMCT	50	2.2 (c)	MBA	Appn-VII Page-24	
GNM (Code-09)	Post Basic B.Sc. Nursing	51	2.2 (f)	PB Nursing	Appn-XII Page-33	

**Only for Lateral Entry Admission**

Diploma in Engg. (Code-10)	B.Tech. Lateral Entry in respective branch	60	2.3(a)	LE B.Tech.	Appn-II Page-22
Dip. in Pharmacy (Code-11)	B.Pharm Lateral Entry	61	2.3(a)	LE B.Pharm.	Appn-III Page-23
Diploma in HMCT (Code-12)	BHMCT Lateral Entry	62	2.3(a)	LE BHMCT	Appn-IV Page-23
BCA / B.Sc. (CSE/IT) (Code-13)	MCA Lateral Entry	63	2.3(b)	LE MCA	Appn-XV Page-33

**5.5 Nationality : (Item - 5)**

Darken the appropriate circle

**5.6 Gender: (Item - 6)**

Darken the appropriate circle.

**5.7 Identity Proof : (Item-25)**

Mention the identity proof which the candidate is required to carry (any one of the following) to the examination hall as mentioned below.

Identity Proof	Code
Voter ID Card	01
Passport	02
Aadhar Card	03
Driving License	04
College / School ID Card	05
PAN Card	06
Other	07

Candidates are required to produce the mentioned identity proof along with a xerox copy of the same and two recent colour photographs (same as pasted in the application form) during examination.

**5.8 Date of Birth: (Item - 8)**

Enter the date, month and year of your birth as per the english calendar and as recorded in your School/ Board/ Pre-University examination certificate. Use numerals 01 to 31 for DATE, abbreviations JAN, FEB etc. for MONTH, and the last two digits of the YEAR of birth. For example, if born on 23rd JANUARY 1990 the date should be entered as follows: 23 JAN 90. Darken the appropriate circle in each column.

**5.9 Choice of Examination Centres: (Item-9)**

The following table gives a list of the numerical codes of the places where centres for the SAAT – 2015 will be located. Select three different places in order of your preference. Enter the appropriate codes in the boxes provided at the top and darken the corresponding circles below them. The first preference must be entered under column-I and the second and the third preferences under column-II & III respectively.

**Note: The University reserves the right of cancelling or reallocating any examination centre.**

**TENTATIVE LIST OF SAAT – 2015 CENTRES WITH CENTRE CODE (INSIDE ODISHA)**

Place	Code	Place	Code
ANGUL	11	KEONJHAR	22
BALASORE	12	JEYPORE	23
BARGARH	13	NAYAGARH	24
BARIPADA	14	PURI	25
BHAWANIPATNA	15	RAYAGADA	26
BERHAMPUR	16	ROURKELA	27
BHADRAK	17	SAMBALPUR	28
BHUBANESWAR	18	SUNDARGARH	29
BOLANGIR	19	PHULBANI	30
CUTTACK	20	KENDRAPARA	31
JAGATSINGHPUR	21	KORAPUT	32

**OUTSIDE ODISHA**

AGARTALA	33	KHARAGPUR	45
BOKARO	34	KOLKATA	46
BENGALURU	35	KOTA	47
CHANDIGARH	36	LUCKNOW	48
CHENNAI	37	MUMBAI	49
DURGAPUR	38	NAGPUR	50
DELHI	39	PATNA	51

GUWAHATI	40	RAIPUR	52
HYDERABAD	41	RANCHI	53
JAMSHEDPUR	42	VARANASI	54
SHILONG	43	VIJAYAWADA	55
SURAT	44	VISHAKAPATNAM	56

**5.10 Year of Qualifying Examination: (Item - 10)**

- (For Engineering / Medical / Dental / Nursing / Pharmacy / HMCT / Law )** : Those who have already passed 10+2 or an equivalent qualifying examination should indicate the year of passing and darken the appropriate circles.
- P.G. Programme**: Those who have already passed Bachelors Degree or an equivalent qualifying examination should indicate the year of passing and darken the appropriate circle.
- Lateral Entry**: Those who have already passed Diploma / BCA / B.Sc. examinations should indicate the year of passing and darken the appropriate circle.
- Those who are appearing at the qualifying examination in 2015 should darken the circles corresponding to 2015.

**NOTE: Results (Mark sheets and Provisional Certificate) of qualifying examination has to be produced at the time of counselling. Without the final result of the qualifying examination, a candidate is not eligible to participate in the counselling.**

**5.11 Percentage of Marks: (Item - 11)**

- Write the actual percentage of aggregate marks obtained in the 10th Class / Equivalent examination under column-I.
- Write the actual percentage of aggregate marks obtained in the qualifying examination under column-II if the results are available. Otherwise leave it blank. Enter only integer part of the percentage of marks and ignore the decimal point. For example 76.15, 76.56 or 76.90 be taken as 76 only. Darken the appropriate circles against each entry.

**5.12 Photograph: (Item - 12)**

Paste your recent colour photograph with white background and preferably wearing dark coloured clothes. **The approximately size of the photograph should be 3 cm x 4 cm (taken not earlier than one month).** Your face should cover about 75% of the photo. Please **retain two copies of the same photograph to be used in examination hall.** Paste the photograph in the box provided. Do not sign on the photograph and do not get it attested.

**NOTE: Photograph should not be larger than the space provided in the box for pasting it. Keep four more copies of the same photograph, to be required at the time of counselling.**

**5.13 Complete Mailing Address: (Item - 13)**

Write the complete postal address to which any communication is to be sent till August 2015. The address must include your name, C/O name if required and other details including the PINCODE for the mail to reach you. Indicate phone number, if any, with STD code. Please note that this block will be machine scanned and therefore, it should be written very clearly in black / blue ball pen only (not in pencil). If you make any mistake,

(10)

cover the whole box with an exact size white paper slip and write your address on it. You may also paste a typed address slip inside the box. Your address must not overflow this box.

#### 5.14 Signature: (Item - 14)

Put your usual signature in black / blue ball pen within the box provided. Your signature must not overflow or touch the border of the box provided. Your signature establishes your identity. Hence, do not merely write your name in capital letters. This may lead to rejection of your application.

#### 5.15 ID Proof No. (Item - 15)

Write the details of any one of identity proof (PAN/DL/ College ID Card/Passport/Voter ID Card/ UID Card etc.) required to be produced during examination in the space provided.

**Example :** For PAN Card write AKPPQ1234X  
For Voter ID Card write CPY1234567  
For College/School ID Card write your roll no.

#### 5.16 EMAIL ID (Item - 16)

Write neatly your email id as in the example.

#### 5.17 Board of Qualifying Examination: (Item - 17)

Darken the appropriate circle.

#### 5.18 Mobile Number : (Item- 18)

Write your 10 digit mobile number in the space provided. Darken the appropriate circle against each digit. SMS alert will be sent to this number for receipt of application, dispatch of admit card, publication of result, counselling schedule etc.

#### 5.19 For M.Tech / M.Pharm / MBA (Item - 19)

Candidates applying for M.Tech. & M.Pharm. programmes as required to indicate whether or not they have qualified GATE/GPAT by darkening the appropriate circle. Candidates applying for MBA with valid MAT Score are required to indicate by darkening the appropriate circle.

#### 5.20 VALID GATE / GPAT / MAT Score : (Item - 20)

Write your valid GATE / GPAT / MAT score for the year 2015 in the space provided. Darken the appropriate circle against each digit.

#### 5.21 Name of the Parents / Guardian (if required) : (Item - 21)

Write the name of one of your parents or guardian exactly as in your 10th class or equivalent certificate, if given. Write the name of your father and mother if no name is given in the 10th certificate, write a single letter in a box. Within any initial of the name, do not leave any blank box. Leave one and only one blank box between any two initials of the name. Darken the appropriate circle under each letter of the name. If the name has several initials, leave one blank after each of them.

#### 5.22 Relationship: (Item - 22)

Indicate your relationship with the parents / guardian named in item 18 by darkening the appropriate circle.

#### 5.23 Residence/State: (Item - 23)

State Name	Code	State Name	Code
Andhra Pradesh	01	Manipur	17
Arunachal Pradesh	02	Meghalaya	18

Assam	03	Mizoram	19
Bihar	04	Nagaland	20
Chhattisgarh	05	Odisha	21
Delhi	06	Pondicherry	22
Goa	07	Punjab	23
Gujarat	08	Rajasthan	24
Haryana	09	Sikkim	25
Himachal Pradesh	10	Tamil Nadu	26
Jharkhand	11	Telangana	27
Jammu & Kashmir	12	Tripura	28
Karnataka	13	Uttar Pradesh	29
Kerala	14	Uttarakhand	30
Madhya Pradesh	15	West Bengal.	31
Maharashtra	16	Any Other	32

#### 5.24 Alternative Mobile No. : (Item-24)

Please provide an alternative mobile number other than mentioned item - 18, to which communication can be made in emergency.

#### 5.25 Mother Tongue : (Item - 25)

Use the language codes given below to indicate your mother tongue and darken the appropriate circle.

Language	Code	Language	Code
Assamese	01	Odia	09
Bengali	02	Punjabi	10
English	03	Sanskrit	11
Gujarati	04	Sindhi	12
Hindi	05	Tamil	13
Kannada	06	Telugu	14
Kashmiri	07	Urdu	15
Malayalam	08	Others	16

#### 5.26 Advertisement Information : (Item - 26)

Kindly write the medium through which the candidate came to know about the admission process of the University.

#### 5.27 Details of Qualifying Examination : (Item - 27)

The candidate is required to mention the details of qualifying examination passed / appeared (eg. 12th, B.Tech., Graduation, B.Pharm., etc.), the Roll No. / Regd. No. of the qualifying examination, name and location of the school / institute where qualifying examination passed / appeared.

#### 5.28 Declaration by the Candidate: (Item - 28)

The candidate must sign the declaration in black / blue ball pen. The place and date should also be entered into. Two signatures: the one below the declaration and the other in the box below your photograph, should be identical. Applications without signatures or with different signatures at the two places will be treated as incomplete and rejected. The declaration by the candidate must be countersigned by parent(s) / guardian. Write the name of Parents / Guardian in the space provided.

#### 5.29 Enclosures with the Application Form :

You have to enclose only the acknowledgement card duly filled up with appropriate stamp pasted.

**DO NOT enclose any copies of certificates/ mark sheets / appendix forms with the application form.**



**6. SUBMISSION OF FILLED IN APPLICATION FORM :**

Application form duly filled in, should be sent by Registered Post / Speed Post / Courier service to **The Director (Admissions), Siksha 'O' Anusandhan University, Khandagiri Square, Khandagiri, Bhubaneswar, Pin – 751030, Odisha, India, so as to reach on or before 04.04.2015.**

- a) Hand-delivery of forms (drop box) at University Office and ITER is accepted.
- b) Any application received after the due date will not be considered.
- c) The university will not be responsible for any postal delay or irregularity or loss in postal transit of the application form.
- d) The incomplete application form of any sort shall be summarily rejected.
- e) The Candidates are advised to keep a photocopy of the filled in application form for future reference.
- f) The Candidate is required to write the name of the programme on top of the envelop containing the application form.
- g) In no case the application form should be stapled / pinned / tagged or folded. The candidates sending their application by post should duly fill up the acknowledgement card, affix postage stamp of denomination ₹ 6/- and enclose the same inside the envelope meant for submission of application form.
- h) A single application form is sufficient for any possible combination of courses to be opted. Do not send extra / duplicate forms which will be rejected.
- i) Not more than one set of application form shall be submitted in one envelope. If the envelope contains more than one application form, the whole content will be rejected.
- j) Any correspondence in future, should mention the application number printed below the bar code of the application form.

**7. ISSUE OF ADMIT CARD:**

- a) Candidate can download their Admit cards from the University website 10 days prior to the entrance.
- b) The candidate is required to produce a valid identity proof (as mentioned in the application form and Admit Card) along with printed Admit Card. The candidate has to sign the Admit Card in presence of the invigilator during examination.
- c) Candidates must preserve the admit card till the admission process is over.

**8. RULES FOR ENTRANCE EXAMINATION :**

- a) The SAAT – 2015 will be held at different centres as per the schedule.
- b) The medium of examination is English.
- c) The examination hall shall be opened to the candidates half an hour before the examination commences. No candidate will be allowed to enter into the examination hall without a valid original / duplicate admit card.
- d) Candidates are required to take their respective seats at least 15 minutes before the commencement of the

examination, strictly according to the sitting chart notified earlier by the Centre Superintendent.

- e) In no case a candidate shall be allowed to enter the examination hall after the examination starts.
- f) Attendance will be taken by the invigilators on the Attendance Roll sheets provided by the Director (Admissions), with full signature of candidates against their Roll Numbers, 15 minutes before the commencement of examination. During the examination the candidates have to enter their Roll Number, the Application Number and the Answer Sheet and also Serial Number on the Attendance Roll sheets, which shall be verified by the invigilators.
- g) No candidate will be allowed to leave the hall without surrendering his/ her question booklet and answer sheet until the examination is over. Ordinarily no candidate shall be allowed to leave the hall temporarily during the examination.
- h) Candidates suffering from any disease which renders their presence in the examination hall undesirable in the interest of other candidates will not ordinarily be allowed to enter the examination hall. Candidates are not allowed to have substitute writers, normally.
- i) Candidates should bring their own black / blue ball pens, HB pencils for writing and blackening the circles. Books, printed papers (other than their Admit Cards), manuscripts, or electronic gadgets such as mobile phones, cell phones and electronic diary calculators etc, **should not be** taken into the examination hall.
- j) The candidates are advised to check the perfectness of the question booklet and answer sheet before attempting to answer. In case page/pages are found missing, torn or not in order, the candidates should immediately report to the invigilator and get a fresh question answer book issued after surrendering the defective ones.
- k) Candidates are not permitted to talk to each other in the examination hall. No one should receive any help from or assist another in any manner. Malpractice in any form detected during or after the examination would lead to not only cancellation of candidature but also more severe punishment as deemed fit by the SAAT–2015 committee.
- l) A candidate should write his/her roll number as assigned in his/her admit card and sign in the space provided in the question booklet and answer sheet. He/she should in no case write anywhere else in the answer sheet his/her own name, roll number or any thing else that is not strictly related with the answers to the questions given. Writing of any such thing a serious offence. The answer sheet without the candidate's roll number clearly written in the space provided will not be examined.
- m) A candidate wishing to say anything should stand up in his/her seat and remain standing till the invigilator

attends him/her. He/she should in no case leave the seat or make any noise to draw the invigilator's attention.

- n) In any other matter not mentioned in these rules, the Centre Superintendent is empowered to take necessary decisions.

**9. EXAMINATION PROGRAMME :**

The SAAT-2015 will be held on **9th May, 2015** as per following programme.

	1st Sitting	2nd Sitting
	9.00 AM to 11.00 AM	12.00 Noon to 1.00 PM
		2.30 PM to 4.30 PM
Physics & Chemistry/ BHMCT / MCA MBA / MHA / MHMCT/MHTM	Mathematics	Biology / All Lateral Entry / Post Basic Nursing / M.Tech. / M.Pharm. / M.Sc. Nursing/ M.Sc. All / LLM BA LLB / BBA LLB

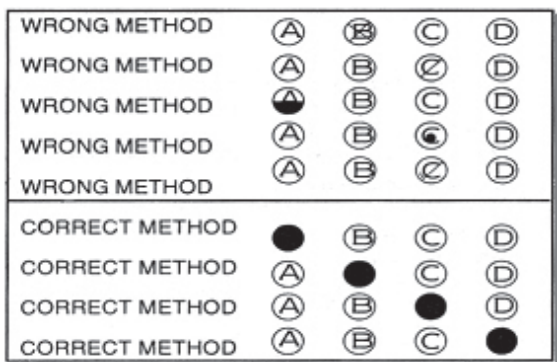
**10. EXAMINATION PROCEDURE:**

There will be multiple choice questions. The number of questions will be sixty (60) per each hour of examination. Each question shall have four probable answers with only one is correct answer; and the examinee shall have to blacken only the correct circle with HB pencil or black / blue ballpoint pen. Each correct answer shall carry four marks whereas each incorrect answer will lead to deduction of one mark. Each unanswered question will carry zero mark. If more than one circle is darkened for one question, it will be treated as an incorrect answer and one mark will be deducted.

**10.1 Wrong / Correct ways of Marking:**

Each question is followed by answers, which have numbers A B C and D. Select the correct answer. Then by using HB pencil or black / blue ball pen darken the circle bearing the correct answer in the answer sheet against the corresponding number of the question. The wrong and correct method of answering is illustrated below.

Wrong & Correct Methods of showing your answer.



**11. MERIT LIST :**

Separate merit list for all qualifying candidates shall be prepared on the basis of SAAT – 2015 results in the following manner.

- a) One for candidates seeking admission to Engineering / Technology degree courses on the basis of marks obtained in Physics, Chemistry and Mathematics.

- b) One for candidates seeking admission to Pharmacy degree course on the basis of marks obtained either in Physics, Chemistry and Mathematics or in Physics, Chemistry and Biology, whichever is higher.
- c) One each for candidates of diploma streams seeking admission under Lateral Entry scheme to Engineering and Technology / MCA, Pharmacy, and Hotel Management & Catering Technology courses.
- d) One each for candidates seeking admission to MCA, M.Tech. (branch wise), M.Sc. Biotech, MBA, MHA, MHMCT, M.Pharm., LLM and M.Sc. Nursing Courses.
- e) One for candidates seeking admission to BHMCT Courses.
- f) One each for candidates seeking admission to B.Sc. Nursing and Post Basic B.Sc. Nursing Courses.
- g) One for candidates seeking admission to B.B.A. LLB. courses.

In addition, separate merit lists will also be drawn for candidates qualifying under each of the reservation categories. Each qualified candidate shall be given a rank card.

**12. ADMISSION RULES AND PROCEDURE:**

- 12.1 The reservation policy will be followed as specified in article 13.
- 12.2 Admission is strictly based on merit (i.e. rank obtained) and choice of the candidate for different courses offered during the counselling.
- 12.3 Candidates will be called for counselling as per the schedule to be dispatched along with the rank card.
- 12.4 During Counselling all certificates in original will be verified. For records of the Institutes, two sets of attested copies of the certificates and mark sheets etc. will be collected during counselling.
- 12.5 A candidate selected through the counselling for a course is admitted and registered as a student of SOA University automatically. The student receives a registration number and a university registration card.
- 12.6 Candidates who do not receive the SAAT-2015 rank card or have lost the rank card can get a duplicate rank card from SAAT-2015 Cell, on payment of ₹ 200/- in the form of a Demand Draft drawn in favour of **SIKSHA 'O' ANUSANDHAN UNIVERSITY, Bhubaneswar, payable at Bhubaneswar.**

**NOTE :** At any time during the course of study in the university, if it is found that the student is not satisfying the minimum eligibility criteria for admission into a particular course as prescribed by the SAAT-2015 information brochure and rules laid down by other statutory bodies, the candidates admission will be cancelled. He/She cannot claim the same in court of law. Hence, candidates are requested to make sure that they fulfill all the criteria before seeking admission.

**13. RESERVATION POLICY:**

- 13.1 15% and 7.5% seats in all programmes are reserved respectively for candidates belonging to Schedule Caste and Schedule Tribe by birth (not by marriage or adoption).

**Note :** Scheduled Caste / Scheduled Tribe persons who have migrated from their state of origin to another state for the purpose of seeking education, employment etc., will be deemed to be Scheduled Caste / Tribe of state of their origin and will be entitled to derive benefits from the state of origin and not from the state to which they have migrated. (Vide Govt. India Letter No. BC/160 14.1.82

SC & BCD / dated 22<sup>nd</sup> Feb., 1985). Thus, SC/ST candidates from Odisha who are staying outside the state have to produce SC/ST certificate from the competent authority of Odisha State during counselling.

**Separate merit lists will be drawn up for each reserved category. If eligible candidates belonging to one reserved category are not available, seats can be filled up by the candidates belonging to the general category.**

13.2 OBC candidates are only eligible for mark relaxation.  
13.3 Candidates applying for SC/ST/OBC reserved category shall furnish SC/ST/OBC certificate from the Tahasildar of the place of birth **at the time of counselling** in the format given in the Counselling Brochure along with original caste certificate.

13.4 3% seats are reserved for physically handicapped (PH) candidates for admission to engineering / technology / Medical / Dental / MBA / MCA / HMCT / Pharmacy / Nursing / Law / Biotechnology / Agriculture courses and candidates are eligible to be considered under Physically Handicapped Category for admission to these courses with 40% disabilities in consonance with section-39 of the Persons with Disabilities (Equal opportunities, Protection of Rights and full participation) Act, 1995. Candidates applying for PH reserved category shall have to furnish a medical certificate from a medical board constituted under the chairmanship of Dean, Institute of Medical Science & SUM Hospital (IMS & SH) with senior professors of the Institute of Medical Science & SUM Hospital (IMS & SH) and Director (Admissions) of SOA University or his representative(s) at the time of counselling in format given in the Counselling Brochure. The board should certify that they are eligible to be categorized as physically handicapped candidates with capable of undergoing each part of the requirements for Engineering / Medical studies. **The decision of the Medical Board will be final & binding.** They SHOULD NOT, therefore, submit along with the application form any medical certificate to the effect that they are physically handicapped.

Visual disability and hearing impairment candidates are not eligible as stipulated by Medical Council of India.  
13.5 30% of seats under each category for all the programmes **(except for MBBS and BDS courses)** are reserved for women candidates.

13.6 a) Seats available under general category in any course are those available after deduction of the number of seats pertaining to the reserved categories from the total number of seats available for that particular course.

b) For admission into a programme a candidate belonging to categories 13.1, 13.2 and 13.4 can also compete under general category provided he/she satisfies all conditions of eligibility for the same. At the time of counselling for admission, a candidate figuring in the merit list for both reserved and general categories may first exercise his/her option for the institute and discipline for admission under reserved category. A candidate who forgoes his / her option under reserved categories is entitled to exercise his/her option subsequently for the institute and discipline for admission according to his/her merit position under general category.

c) If a candidate does not report during scheduled date / hour of counselling, he/she will be treated as an

absentee and no seat will be kept reserved for him/her. A candidate failing to report for counselling will not be permitted to participate in the counselling subsequently under any circumstances.

d) If all the seats belonging to ST reserved category are not filled up due to non-availability of candidates belonging to ST category, such vacant seats may be filled up by candidates belonging to SC category. If all the seats belonging to SC reserved category are not filled up due to non-availability of candidates belonging SC category, such vacant seats may be filled up by general category. If all the seats belonging to PH reserved category are not filled up due to non-availability of candidates belonging to PH category, such vacant seats may be filled up by candidates belonging to general category.

e) Seats reserved under women category will be filled up by general category candidates in case the same are not filled up.

**f) No reservation norms are applicable for lateral entry admissions.**

**Note :** In case of any change in the percentage of reservation of seats/reservation criteria mentioned in the clause above on the basis of guidelines from MHRD it will be intimated through the counselling brochure to all the merit listed candidates. It will also be published in our website and in the notice board at the counselling venue.

#### 14. CHOICE OF DISCIPLINE :

Selection for admission will be strictly on the basis of rank secured in the merit list subject to the availability of seats in the disciplines at the time of counselling for admission.

**A candidate failing to report for counselling on the date and time prescribed will not be given chance subsequently under any circumstances.**

#### 15. FEE STRUCTURE (₹)

B.Tech. / DDE / DDM / LE - B.Tech.	1,70,000/- p.a.	
M.Tech / MCA / LE - MCA	1,30,000/- p.a.	
MBBS (Nine semesters)	3,95,000/- p.s.	
BDS	3,25,000/- p.a.	
MBA	2,50,000/- p.a.	
MHA/ MHMCT / MHTM	70,000/- p.a.	
B.Pharm	90,000/- p.a.	
LE - B.Pharm	80,000/- p.a.	
M.Pharm	1,10,000/- p.a.	
M.Sc. (All)	70,000/- p.a.	
BHMCT / LE - BHMCT	60,000/- p.a.	
B.Sc. Nursing (Basic / Post Basic)	65,000/- p.a.	
M.Sc. Nursing	80,000/- p.a.	
BA LLB / BBA LLB / LLM	80,000/- p.a.	
Institute Caution Money (one time)	5,000/-	
Student Welfare Fund (one time)	2,000/-	
Student Registration to Professional Societies* (one time)	3,000/-	
HOSTEL FEES	Boarding Charges	36,000/- p.a.
	Caution Money (One time)	4,000/-
	Total Hostel Fees	40,000/-
Transportation Fees (optional)	15,000/- p.a.	

\*Only applicable for candidates admitted to ITER, except Lateral Entry (B.Tech. & MCA) students.

**Per Annum : p.a. & Per Semester : p.s.**

(14)



**N.B. :** (a) Hostel fees exclude the mess charges. The mess charges will be approximately ₹ 3000/- p.m (as per actuals). The hostel fees is applicable for current academic session. This will be reviewed and notified in subsequent years.

(b) Registration fee of ₹ 2500/- per semester towards semester registration, for all programmes which will be deposited at the beginning of the semester.

(c) At the time of counselling the candidates are required to pay an initial amount of ₹ 30,000/- in the form of a demand draft in favour of "Siksha 'O' Anusandhan University", payable at Bhubaneswar. The draft should be drawn from any nationalised bank. The balance amount has to be paid at the time of admission at respective institutes in form a demand draft in favour of "Siksha 'O' Anusandhan University". Hostel and Transportation fees are to be paid in separate drafts. The annual admission fees has to be paid by the student by 15th of July every year, failing which penalty as notified time to time be imposed.

**N.B.:** The University has provision of scholarship to meritorious students in various programmes as per given in Appendix-XVII.

#### 16. REFUND RULES :

The University shall refund the paid fees as per the following rules :

- If a candidate withdraws his/her admission after the counselling and before the classes starts dates for the session 2015-2016 (as notified to the students), the candidate will be refunded all fees paid after deducting the processing fees of ₹ 1,000/-.
- Any candidate withdrawing his/her admission after commencement of classes, no refund will be made.
- For refund the candidate / parent have to submit a written application addressed to the Director (Admissions), Siksha 'O' Anusandhan University along with the original University registration card. The bank account details (for RTGS) of the candidate only is required to be filled in a form available with the Admission Cell and submit along with the photocopy of the front page of the passbook and the original money receipt for the all the fees paid.
- The refund information given above is indicative and the University reserved the right to make changes.

#### 17. COUNSELLING - CUM - ADMISSION:

The counselling of qualified candidates shall be held in the university campus / ITER Campus. The exact schedule of counselling / percentage of seat allocation shall be intimated later to the qualified candidates along with their rank cards. Counselling and seat allocation will be purely on merit basis i.e. based on the performance in the Entrance Examination. Counselling Schedule will be published in the website on the day of declaration of result. Candidates have to attend the counselling as per the schedule. Verification of original documents would be done at the time of counselling / admission, so as to verify records of identification, age, qualifying examination and category of candidates. Candidates must be qualified in SAAT-2015 or any equivalent state/national level entrance test. The university will fill up 15% of seats in professional programmes in view of the instruction issued by the UGC (Admission to specified professional

programmes 1st Amendment interim regulation, 2003). Rest of the seats will be filled up through counselling (SAAT-2015).

For lateral entry, the university shall fill up 20% of seats in each branch of B.Tech, B.Pharm and BHMCT through counselling over and above the sanctioned strength.

The university reserves the right to fill up the vacant seats, if any, in any discipline duly approved by the competent authority of the university.

#### ORIGINAL DOCUMENTS TO BE BROUGHT ON THE DAY OF THE COUNSELLING - CUM - ADMISSION.

- Admit card of SAAT-2015
- Rank Card of SAAT-2015
- Proof of Identity
- Original Date of Birth Certificate / 10th certificate
- Original School / College Leaving Certificate
- +2 Certificate
- +2 Mark Sheet and 10th Mark Sheet
- Diploma / Bachelor's Degree Certificate (for Lateral Entry Candidates)
- Diploma / Bachelor's Degree Mark Sheet (for Lateral Entry Candidates)
- Bachelor's Degree Certificate (for MCA / M.Tech. / M.Pharm. / M.Sc. Nursing / M.Sc. All / MBA/MHA/ MHMCT / MHTM)
- Bachelor's Degree Mark Sheet (for MCA / M.Tech. / M.Pharm. / M.Sc. Nursing / M.Sc. All / MBA/MHA/ MHMCT / MHTM)
- Bank Draft: A fee of ₹ 30,000/- in the form of a demand draft drawn from any nationalized bank in favour of Siksha 'O' Anusandhan University, Bhubaneswar, payable at Bhubaneswar.**
- Any other relevant certificate as mentioned in this Brochure.
- Two sets of attested photocopy of all original documents.
- Four recent passport size coloured photographs
- Caste Certificate in the prescribed format along with original caste certificate.

#### 18. ENQUIRY REGARDING ADMISSION:

Information regarding admission may be obtained from the University, SAAT-2015.

Ph. : +91-674-2350180 / 2350884 / 9437035916

Fax : +91-674-2351217 / 2351880

Website: www.soauniversity.ac.in

e-mail: saat@soauniversity.ac.in

**Note :** All enquiries and correspondence with SAAT-2015 authorities must bear the candidate's Application number. After receiving the admit card the candidate should also quote the Roll No. allotted to him/her in the correspondence, if any. Telephonic enquiry will be attended between 3.00PM to 5.00PM on all working days.

#### 19. LEGAL JURISDICTION:

All disputes pertaining to the conduct of SAAT-2015 shall fall within the jurisdiction of Bhubaneswar only. If any person or officer engages himself / herself in act(s) that would result in the leakage of the question paper(s) or attempt to use or help in the use of unfair means in this Examination, he / she shall be liable to prosecution under the Indian Penal Code.